

# 浙江阿迪娜工业科技有限公司

ADINA Industries Co. Ltd.

QUALITY FORGES BRAND

INTEGRITY BUILDS FUTURE

## 目录 CONTENTS

<b>Electric Hoist</b> .....	01
<b>Overhead Crane</b> .....	14
<b>Gantry Crane</b> .....	28
<b>Crane Parts</b> .....	35

## Enterprise Introduction

Henan Mine Crane Co.,Ltd. (hereinafter called "HMC") is a shareholding industry enterprise, established in 2002, engaged in the manufacture and sale of "Kuangyuan" brand electric hoists/single or double beam overhead cranes/gantry cranes/grab bucket cranes/foundry cranes/explosion proof cranes and relevant spare parts. HMC has got production, installation and maintenance licenses issued by the General Administration of Quality Supervision, Inspection and Quarantine of P.R.C, and HMC is a director-level member of China Lifting Industry Association and China Heavy Machinery Industry Association.

HMC has more than 2700 staffs and floor area of 680,000 square meters, and owns RMB0.38 billion capital fund and over 380 sales branches around the world. HMC has more than 1200 sets of advanced equipment that enable HMC to be able to finish independently over 20 technologic flows, including lathing, milling, planing and grinding. HMC has more than 180 medium and senior technical staff, they are responsible for the design and production guidance for the whole crane products. HMC has obtained ISO9001:2000 the quality management system certification, ISO14001:1996 the environmental management system certification and OHSAS18001 the occupational health management system certification. HMC has a perfect quality-control system, a strict management system, strong production capability and advanced testing measures to ensure the production of high quality products.

HMC makes investment continually, and all kinds of economic index grow by 30% annually. HMC crane products are very popular in both local market and oversea market, HMC crane products have been sold to more than 30 provinces and cities in China, i.e the sales quantity of single beam overhead crane has ranked No.1 for seven consecutive years in China local market. Meanwhile, HMC crane products have been exported to Australia, America, Vietnam, India, Pakistan, Bangladesh, Thailand, the Philippines, Malaysia, Singapore, Malta, Turkmenistan, Saudi Arabia, Ethiopia, Egypt, Peru and other countries and regions.

Every year, HMC manufactures and sells more than 4000 sets of double beam overhead crane and gantry crane, more than 35000 sets of single beam overhead crane, more than 46000 sets of single beam\double beam

electric hoist and relevant accessories. HMC per capita output value and economic benefits are at the first level in the same industry.

HMC has won more than 120 honors, such as "Technological Progressive Enterprise", "China Famous Trademark", "China Famous Crane Top 10 Brands", "Henan Famous Products", "Henan Famous Trademark", "Quality Management Qualified Enterprise", "High Credit Enterprise", "Enterprise without Counterfeit, Fraud or Unjust Competition", "Quality Trustworthy Enterprise", "Technological Advanced Enterprise" and "CCTV Listed Brands".

HMC is a high&new technology enterprise in Henan Province, through continuous technology innovation, developing new products, improving the technological content of products to meet the market demands for higher quality hoisting equipments. On the basis of the digestion and absorption of advanced crane design and manufacturing technology in China and abroad, HMC makes the great effort to redesign the electric hoists and single and double beam cranes, keep pace with other international companies of similar products and have occupied a leading position in the market.

HMC is located in China's central plains, with superior geographical position and people, with scientific management system, automatic office system, huge production capacity, advanced inspection ways and strong sales network, then producing the "Kuangyuan" brand series products which has high quality and reasonable prices to serve the markets at home and abroad. HMC people has the determination to make the company be the first class enterprise in the crane industry in China, and is making the great efforts with their wisdom and ability to write the most brilliant Chinese nation's industrial flying chapter!

Quality forges the brand, integrity weaves bright future. Your ideal is HMC pursuit, HMC sincerely hopes to cooperate with all friends from all over the world and create larger brilliance together!!!



# Electric Hoist

## ▼ Electric hoist

Model : CD,MD

Capacity : 0.25~32t

Lifting height : >3m

Travel speed : 20m/min or 30m/min

Lifting speed : 0.25-5t(double speed: 8 & 0.8m/min, single speed: 8m/min)

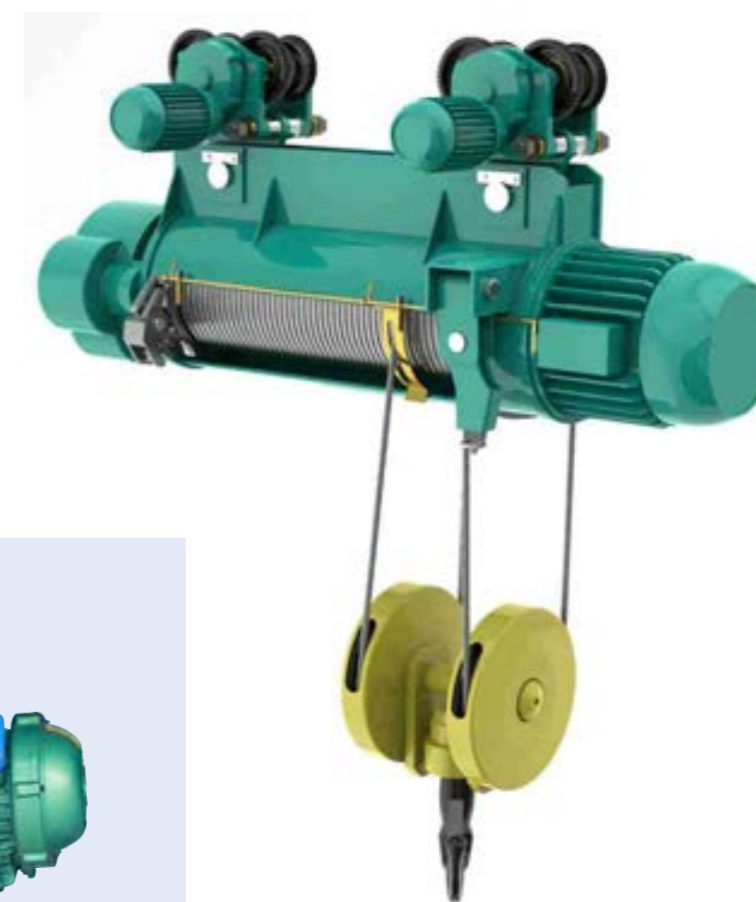
10t(double speed: 7 & 0.7m/min, single speed: 7m/min)

16t(double speed: 3.5 & 0.35m/min, single speed:3.5m/min)

20t(single speed :4m/min)

Usage : workshop, warehouse, factories, mines, cargo storage areas, harbour

Control : Pendant control, remote control





## European single girder electric hoist

Capacity	: 1~20t
Lifting height	: >6m
Travel speed	: 5~20m/min(VFD speed control)
Lifting speed	: Double speed: 0.6~1.6/4.0~10m/min
Usage	: workshop, warehouse, factories, mines, cargo storage areas, harbour
Control	: Pendant control, remote control



## Double rail electric hoist

Model	: LH
Capacity	: 3~32t
Lifting height	: >6m
Travel speed	: 20 m/min or 30 m/min
Lifting speed	: Single speed, double speed
Usage	: workshop, warehouse, factories, mines
Control	: Pendant control, remote control



## ▼ European double girder electric hoist

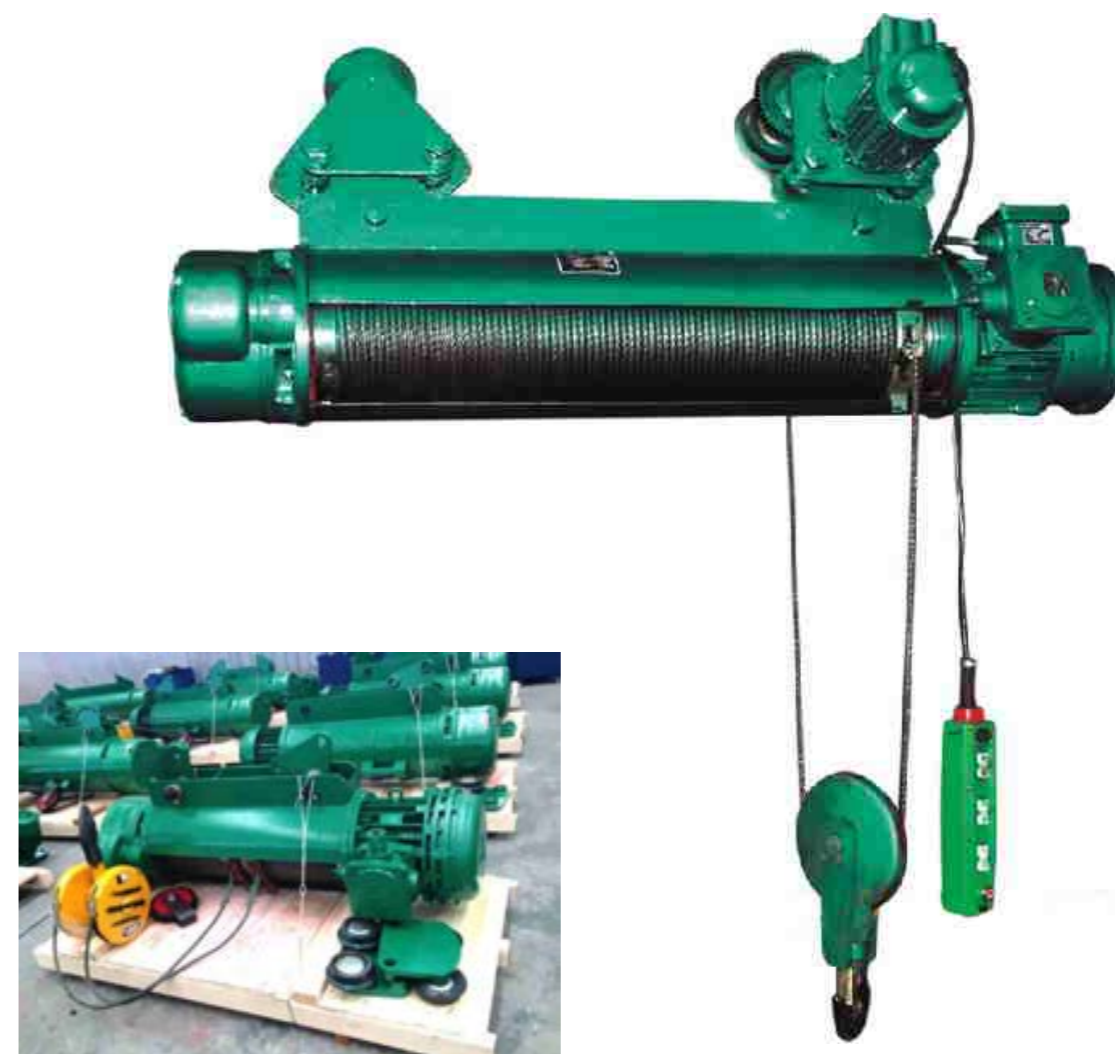
Capacity	: 2~80t
Lifting height	: >6m
Travel speed	: 5~20m/min(VFD speed control)
Lifting speed	: 2t~32t double speed: 0.53~1.0/3.3~6.3m/min 32t~80t single speed: 0~4.9m/min
Usage	: workshop, warehouse, factories, mines, cargo storage areas, harbour
Control	: Pendant control, remote control



## ▼ Explosion-proof electric hoist

Model	: BCD(HB),BMD(HBS)
Capacity	: 0.5~16t
Lifting height	: >6m
Travel speed	: 20m/min
Lifting speed	: Single speed, double speed
Usage	: workshop, warehouse, factories, mines with combustible gas
Control	: Pendant control, remote control

BCD model has only single speed 0.5T-10T (8m/min), 16T (4m/min). HBS model has double speed 0.5-10T(8/0.8m/min), 16T (4/0.4m/min)



## ▼ YH metallurgical hoist

Model	: YH
Capacity	: 3~10t
Lifting height	: >6m
Travel speed	: 20m/min
Lifting speed	: Single speed, double speed
Usage	: Metallurgical plant, steel mill
Control	: Pendant control, remote control



# Overhead crane



## Single girder overhead crane

Model : LDA

Capacity : 1~20ton

Span : Max.31.5m

Speed : Single speed, double speed

Usage : Normal workshop, warehouse

Control : Pendant control, remote control, cabin control



## European type Single girder overhead crane

Model : KSL

Capacity : 1~20ton

Span : Max.31.5m

Speed : Double speed

Usage : Normal workshop, low headroom warehouse

Control : Pendant control, remote control





## ▼ Underhung Single Girder Overhead Crane

Model	: LX
Capacity	: 0.5~10ton
Span	: 3m~22.5m
Speed	: Single speed, double speed
Usage	: Normal workshop, warehouse
Control	: Pendant control, remote control



## ▼ Low Headroom Single girder overhead crane

Model	: LDC
Capacity	: 1~20ton
Span	: Max.31.5m
Speed	: Single speed, double speed
Usage	: Normal workshop, warehouse
Control	: Pendant control, remote control, cabin control





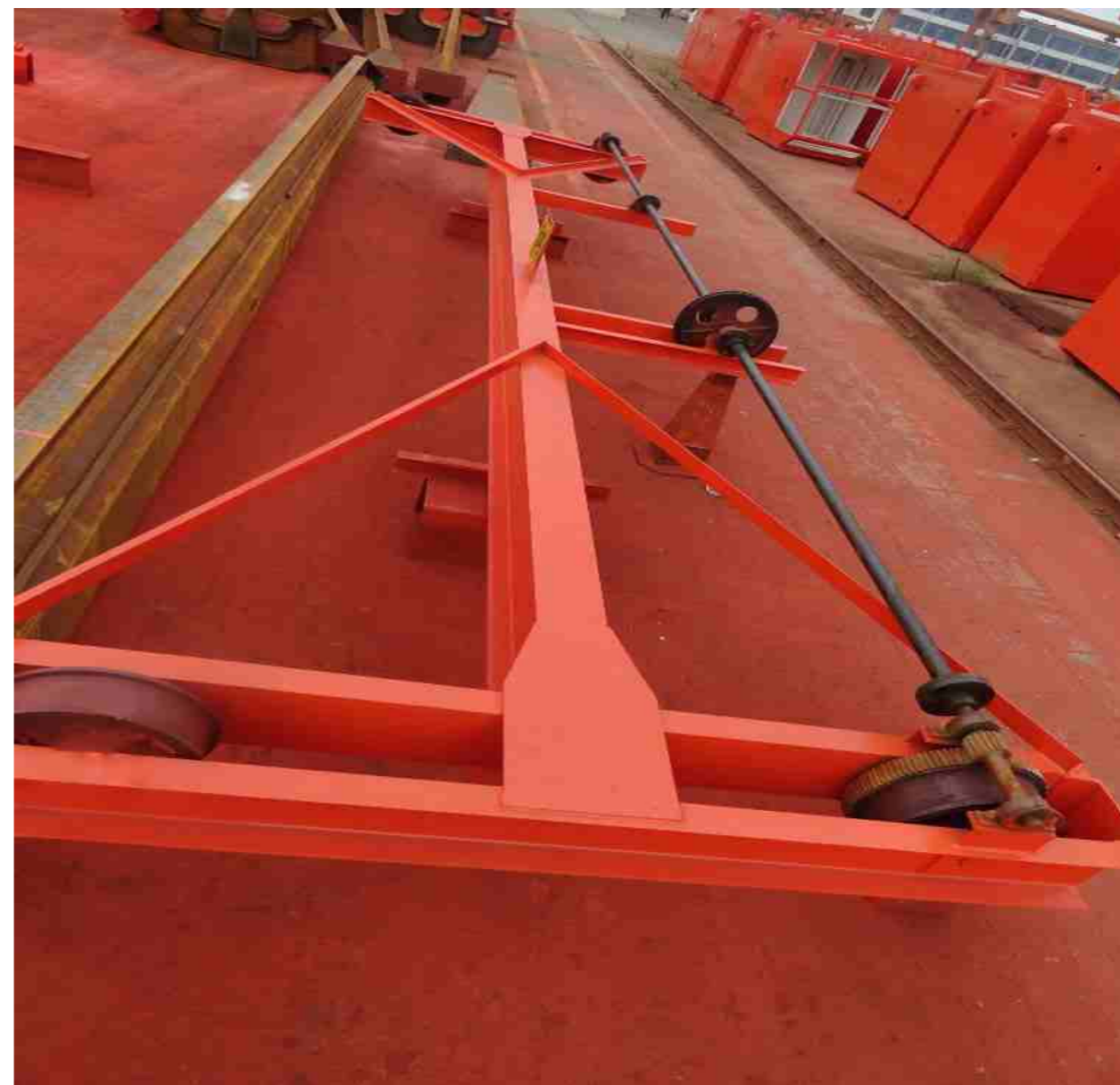
## ▼ LDP Model Single girder overhead crane

Model	: LDP
Capacity	: 1~20ton
Span	: Max.31.5m
Speed	: Single speed, Double speed
Usage	: Normal workshop, Low headroom warehouse
Control	: Pendant control, remote control, cabin control



## ▼ Manually Operated Single Girder Overhead Crane

Model	: SDQ
Capacity	: 1~10ton
Span	: 5m~14m
Usage	: No power warehouse, working shop, equipment repair place, special condition





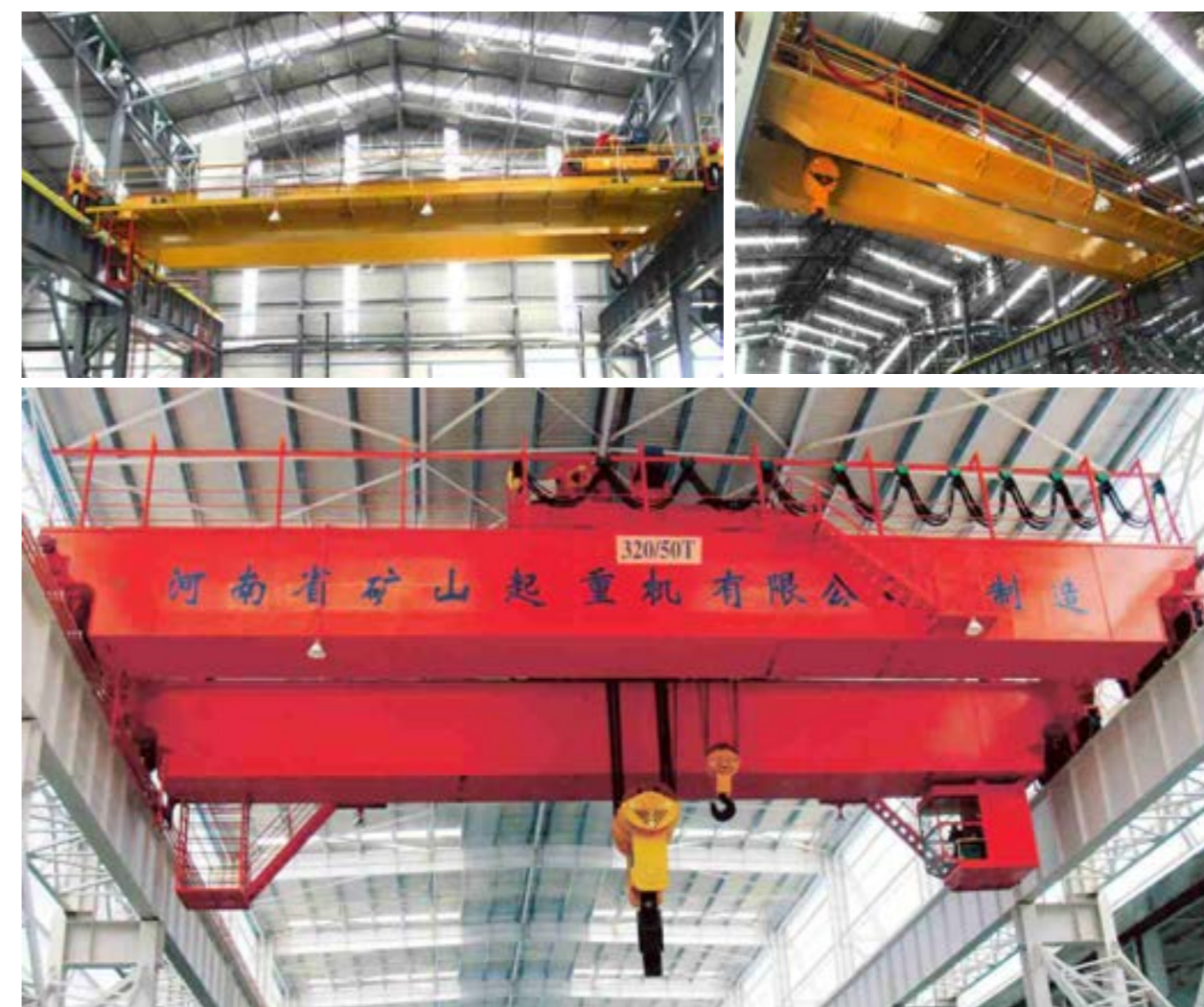
## ▼ Electric hoist double girder overhead crane

Model	: LH
Capacity	: 3~32t
Span	: Max.31.5m
Speed	: Single speed, double speed, VFD speed control
Usage	: Normal workshop, warehouse, cargo storage areas
Control	: Pendant control, remote control, cabin control
Working duty	: A3~A4



## ▼ Double girder overhead crane

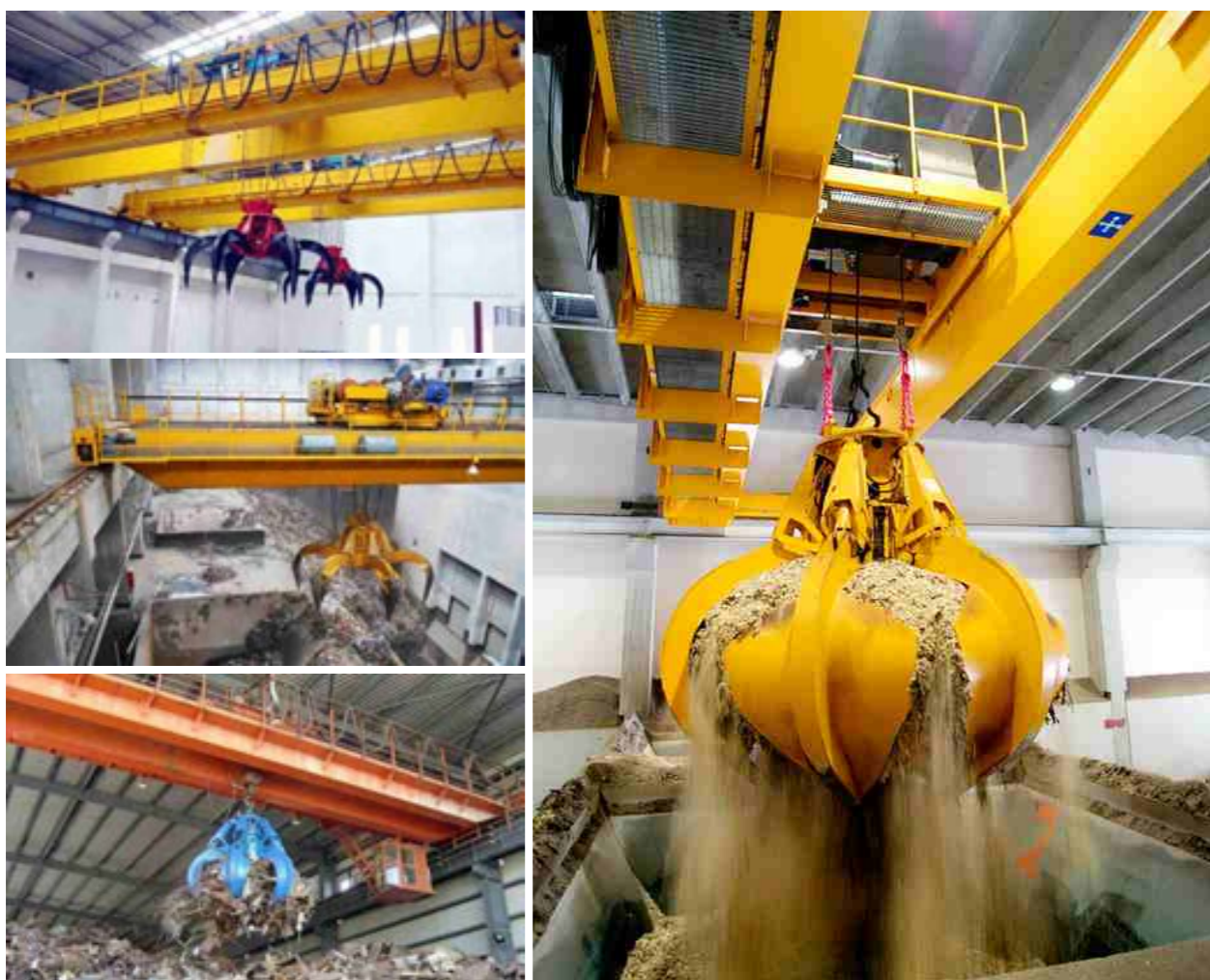
Model	: QD
Capacity	: 5t~450/80t
Span	: Max.31.5m
Speed	: Single speed, VFD speed control
Usage	: Heavy duty workshop, warehouse, cargo storage areas
Control	: Pendant control, remote control, cabin control
Working duty	: A5~A7





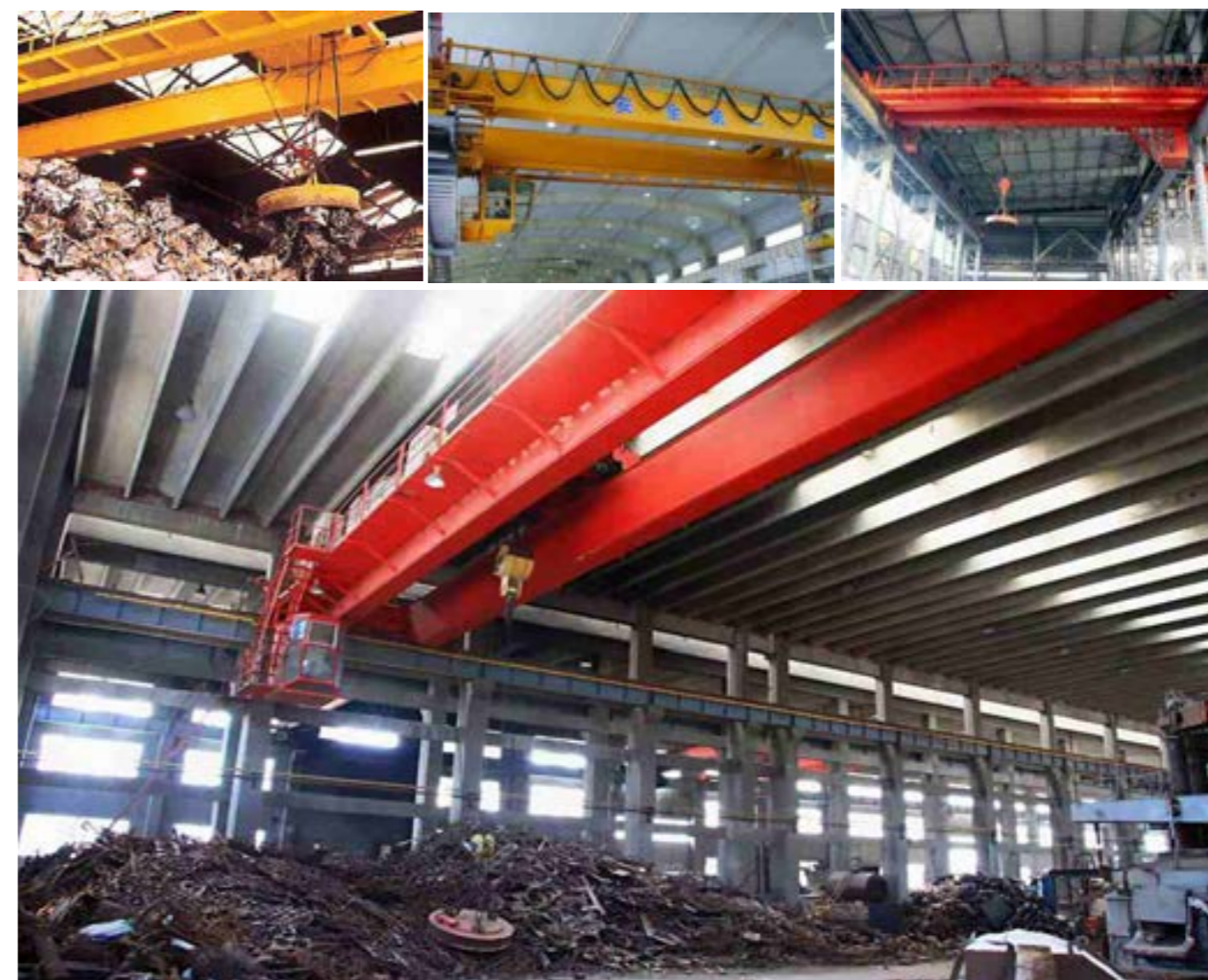
## Grab bucket double girder overhead crane

Model	: QZ
Capacity	: 5~20t
Span	: Max.31.5m
Speed	: Single speed, VFD speed control
Lifting tool	: Grab bucket
Usage	: For lifting bulk material
Control	: Pendant control, remote control, cabin control
Working duty	: A6~A7



## Electromagnetic double girder overhead crane

Model	: QC
Capacity	: 5~32/5t
Span	: Max.31.5m
Speed	: Single speed, VFD speed control
Lifting tool	: Electromagnet
Usage	: For lifting steel material
Control	: Pendant control, remote control, cabin control
Working duty	: A6~A7





## ▼ Double girder hanging beam overhead crane

Model	: QL
Capacity	: 5+5t~25+25t
Span	: Max.31.5m
Speed	: Single speed, VFD speed control
Lifting tool	: Hanging beam, electromagnetic hanging beam
Usage	: For lifting steel pate, shaped steel or other long material
Control	: Pendant control, remote control, cabin control
Working duty	: A6~A7



## ▼ Double girder explosion proof overhead crane

Model	: QB
Capacity	: 5~320/80t
Span	: Max.31.5m
Speed	: Single speed, VFD speed control
Lifting tool	: Electromagnet
Working ambient temperature	: -10℃-60℃
Usage	: For the workshop where the molten metal is lifted
Control	: Pendant control, remote control, cabin control
Working duty	: A6~A7





## ▼ Double girder casting overhead crane

Model	: QDY/YZ
Capacity	: 5~320/80t
Span	: Max.31.5m
Speed	: Single speed, double speed, VFD speed control
Lifting tool	: Hook or gantry hook
Working ambient temperature	: -10°C-60°C
Usage	: For the workshop where the molten metal is lifted
Control	: Pendant control, remote control, cabin control
Working duty	: A7~A8



# Gantry crane

## Single girder gantry crane

Model	: MH
Capacity	: 3~20t
Span	: Max.31.5m
Speed	: Single speed, double speed, VFD speed control
Usage	: Work yard, warehouse, cargo storage areas
Control	: Pendant control, remote control, cabin control
Working class	: A3~A4



## Semi single girder gantry crane

Model	: BMH
Capacity	: 3~20t
Span	: Max.31.5m
Speed	: Single speed, double speed, VFD speed control
Usage	: Open ground, warehouse
Control	: Pendant control, remote control, cabin control
Working class	: A3~A4





## ▼ L type single girder gantry crane

Model	: L
Capacity	: 5~32t
Span	: Max.35m
Speed	: Single speed, double speed, VFD speed control
Usage	: Open ground
Control	: Pendant control, remote control, cabin control
Working class	: A3~A5



## ▼ Double girder gantry crane

Model	: MG
Capacity	: 5~450t
Span	: Max.47m
Speed	: Single speed, VFD speed control
Usage	: Open ground
Control	: Pendant control, remote control, cabin control
Working class	: A3~A7





## ▼ Semi double girder gantry crane

Model	: BMG
Capacity	: 2~32t
Span	: Max.31.5m
Speed	: Single speed, VFD speed control
Usage	: Open ground
Control	: Pendant control, remote control, cabin control
Working class	: A3~A5



## ▼ Container gantry crane

Model	: RMG
Capacity	: Up to 50t
Span	: Max.35m
Usage	: Port or container area
Control	: Pendant control, remote control, cabin control
Working class	: A6~A8





# Crane parts

## ▼ Crane wheel

Type	: Forging
Process	: High frequency quenching
Usage	: For overhead crane, gantry crane running





## ▼ Hook

Capacity	: 1~450t
Type	: Single hook, double hook
Material	: Forging
Usage	: Lifting various objects



## ▼ Mechanical Rope Grab

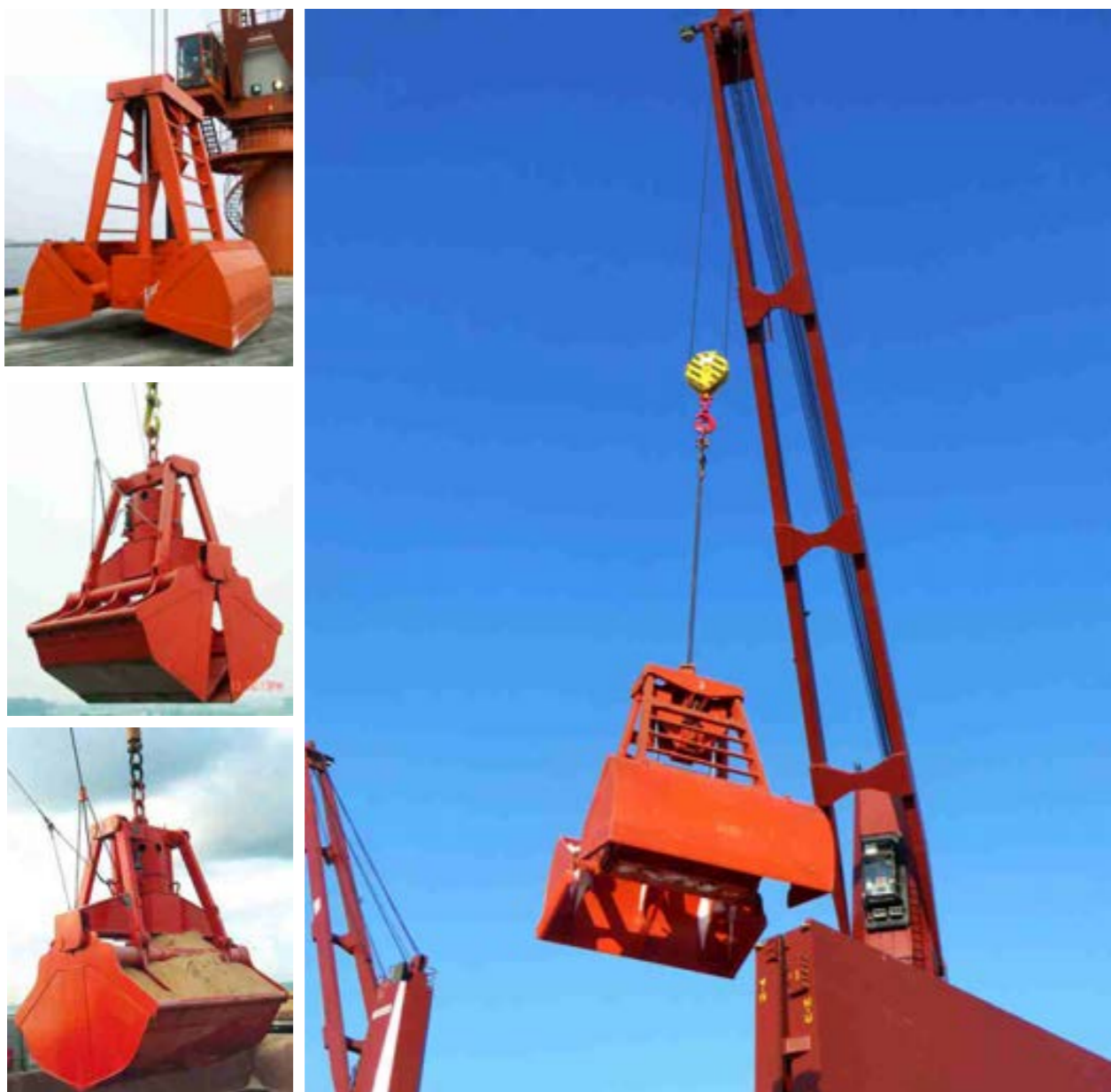
Model	: U
Volume	: 0.5~50m <sup>3</sup>
Type	: Light type: coal, pulverized coal, slaked lime, blast furnace slag. Middle type: manganese ore, copper concentrate, zinc concentrate, iron, sand, lime. Heavy type: iron mine, magnesium ore, copper mine, lead concentrate, dolomite...
Usage	: Overhead crane, gantry crane
Control	: By opening and closing wire rope





## Wireless remote control Grab

Volume	: 5~24m <sup>3</sup>
Usage	: For single hook crane at port, bulk ship etc. places to lift coal, sand, slag and other granular material.



## Electric Hydraulic Grab

Model	: DYZ orange grab, DY clamshell grab
Volume	: 0.5~40m <sup>3</sup>
Usage	: Lifting big ore, pig iron, scrap steel, garbage, iron powder, straw, slag material for steel mill, mining, forest, coal mine, harbor wharf, scrap steel acquisition, garbage disposal...





## ▼ Electric magnet

Model : MW5 MW61 MW03 MW73 MW12 MW15 MW22 MW42...

Usage : Lifting steel, iron, metal scrap, steel plate, steel bar, cast iron ingot...

Safety : 6~7 times

Option : Magnet keeping device, can keeping 10~15mintues when power failure



## ▼ C type hook

Capacity : 1~32t

Material : Q345 steel

Usage : Lifting steel coil

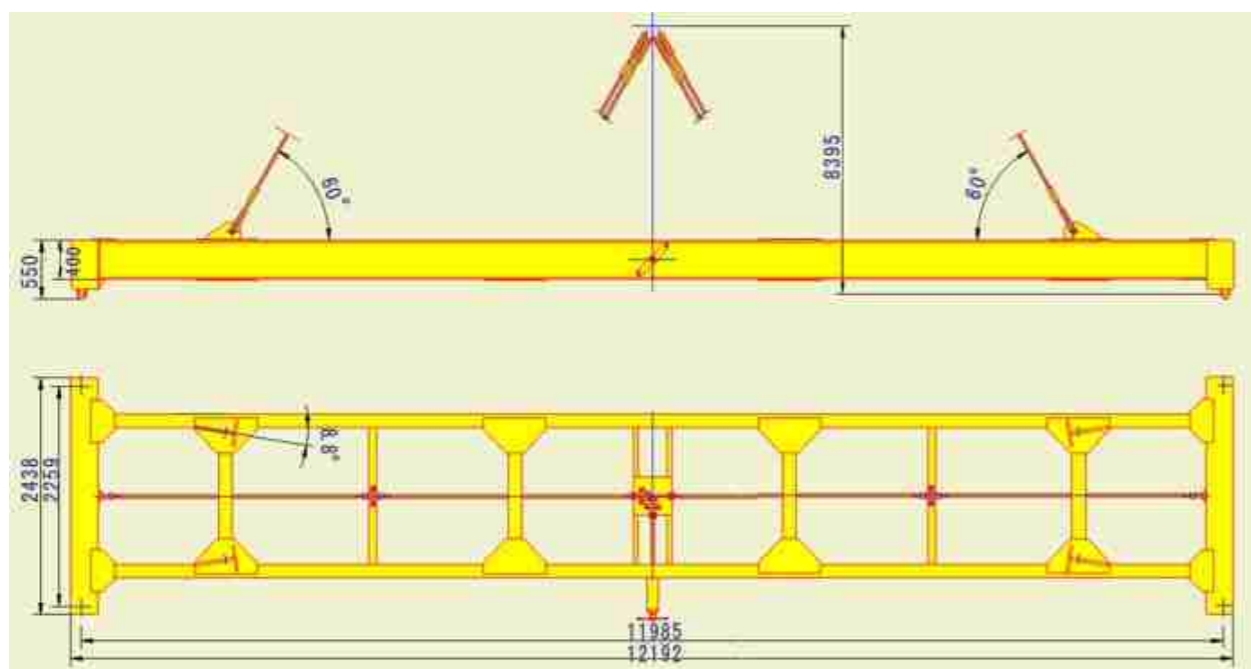
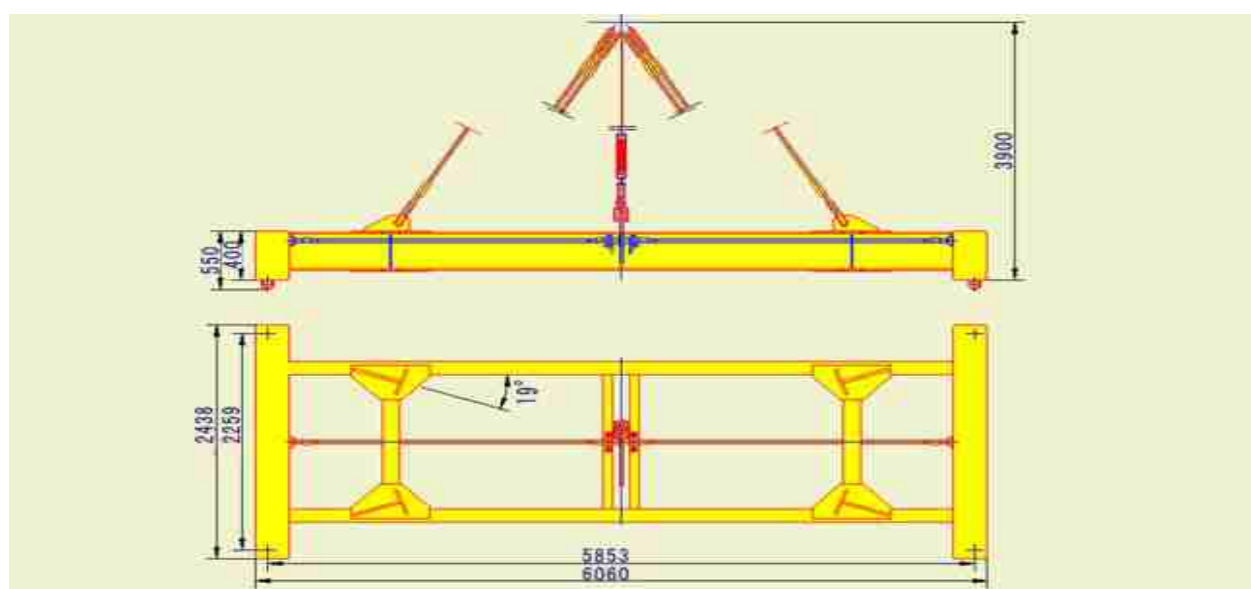
Safety : 3 times





## ▼ Semi-automatic Spreader

Type	: Mechanical
Usage	: Lifting and transferring 20', 40', 45' container



## ▼ Automatic Spreader

Type	: Electric hydraulic
Rotation	: 360°
Usage	: Lifting and transferring 20', 40', 45' container
Other	: Can be telescopic to both lift 20' and 40' container





## ▼ Pillar mounted jib crane

Model	: BZ
Lifting	: 0.5~10t
Lifting speed	: Single speed, double speed
Rotation	: 360°
Usage	: Automatic production line, short distance lifting, maintenance shop
Control	: Pendant control, remote control



## ▼ Wall mounted jib crane

Model	: BB
Lifting	: 0.5~10t
Lifting speed	: Single speed, double speed
Rotation	: 180°
Usage	: Automatic production line, short distance lifting, maintenance shop
Control	: Pendant control, remote control





## Wireless remote control

Model	: F21 F23 F24
speed	: Single speed, double speed, VFD speed control
Usage	: For overhead crane, gantry crane, electric hoist etc



## Electric winch

Model	: JK, JM
Capacity	: 0.5~200t
Lifting height	: 10~3600m
Lifting speed	: 8~30m/min
Usage	: Bridge Construction, dam, harbor, port, ship and other road& bridge project
Control	: Pendant control, remote control

